

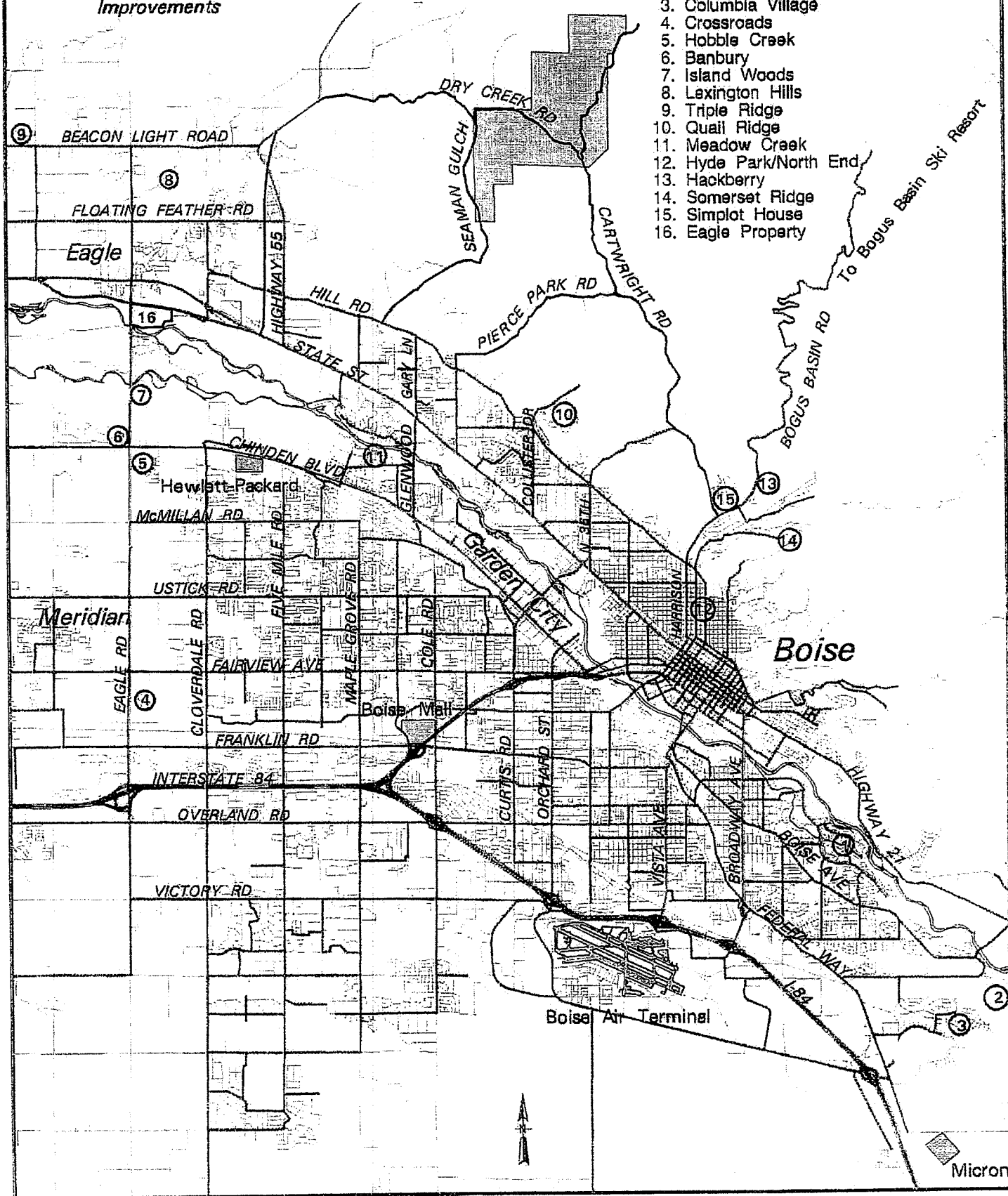


Hidden Springs Vicinity Map

 *Planned Rural Community*
 *Proposed Road Improvements*

Development Key:

1. River Run
2. Surprise Valley
3. Columbia Village
4. Crossroads
5. Hobbie Creek
6. Banbury
7. Island Woods
8. Lexington Hills
9. Triple Ridge
10. Quail Ridge
11. Meadow Creek
12. Hyde Park/North End
13. Hackberry
14. Somerset Ridge
15. Simplot House
16. Eagle Property



HIDDEN SPRINGS

CHANGE YOUR VIEW



RED TAIL
TRAIL LOOP

MERCANTILE
POST OFFICE
CAFE
PRESCHOOL
LIBRARY

FIRE STATION
SHERIFF'S OFFICE

HIDDEN SPRINGS
CHARTER SCHOOL

CLUBHOUSE &
POOL

DRY CREEK RD.
SENAVA'S GOLF DR.

PRESERVE
OPEN LAND

COMMUNITY BARN

DRY CREEK

PRESERVE
OPEN LAND

NOTE: This illustration of the Town Plan is based upon current development concepts which are subject to change without notice. No guarantee is made that the roads, buildings, landscaping, amenities and other features shown on this plan or otherwise described will be built, or if built, will be of the same type, size or nature as shown or described. Please consult the information center for current plans & pricing. 12/03



HIDDEN SPRINGS FOUNDING PRINCIPLES

RURAL CHARACTER AND FARMING TRADITIONS: We will maintain the 135-year old farm and rural traditions of the area.

SMALL TOWN: Traditional neighborhood design will be the foundation for the small-town lifestyle.

NATURAL ENVIRONMENT: We are passionate about respecting and cherishing the natural environment.

TRADITIONAL HOMES: We will design and build homes that are comfortable and long-lasting; homes that will use energy and resources efficiently and responsibly.

QUALITY OF LIFE AND HEALTHY LIVING: We have set aside, and will care for, large and diverse areas for outdoor living and recreation.

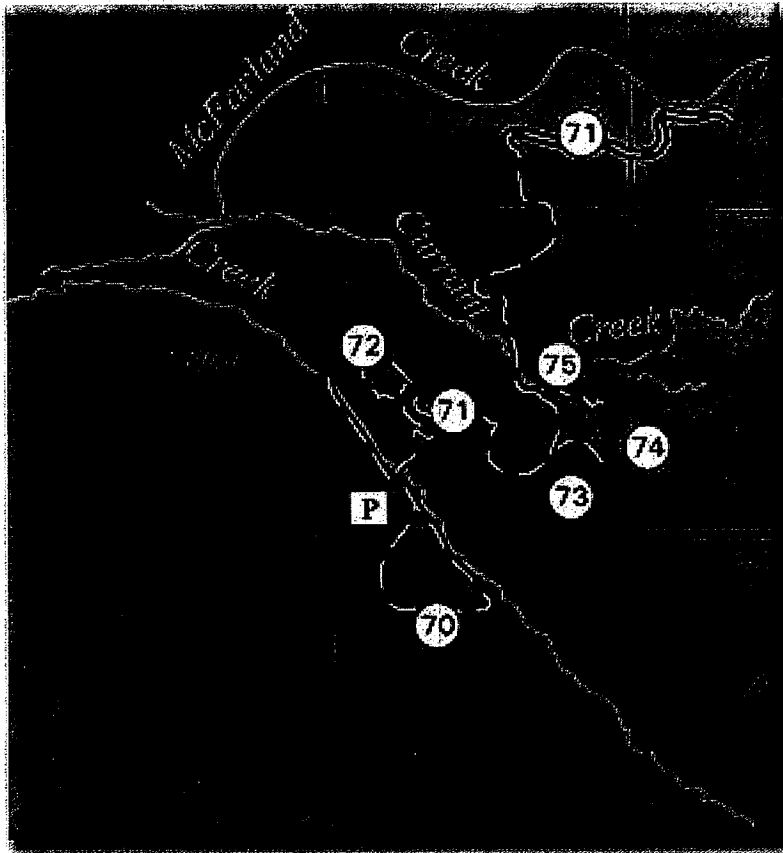
EDUCATION: We believe quality education starts at home, and we will support neighborhood schools and lifelong learning opportunities.

DIVERSITY: We will offer a variety of homes so that people of many ages, incomes, and backgrounds can live at Hidden Springs.

VALUE AND VALUES: We will create a community that will provide enrichments, enjoyment, and value for many generations to come; a place where you will be proud to watch your grandchildren grow up.

HIDDEN SPRINGS

CHANGE YOUR VIEW



Hidden Springs Trails

By working cooperatively with the Hidden Springs Community, a number of trail opportunities have been created in the Dry Creek Valley. Try starting and ending at the Merc where you can pick up a picnic or finish with a cool beverage. There are even more trails planned within this community so stay tuned for even more fine trail experiences.

Red Tail Trail and associated side spurs: Trail numbers 70 - 75.

This is the main trail that crosses the farm flats to Dry Creek Road and then climbs to the ridge above, eventually dropping to Currant Creek. A long climb will then take you to a high point for great views of Stack Rock and beyond. Try this trail as an out and back as well since the views and experience changes in each direction.

Please Note - This public trail is on private land. Please respect all closure and adjacent landowners by using only the marked trails. Your cooperation will make it easier to create more trails elsewhere.

Dry Creek Trail

While this trail is not yet built, it is worth mentioning simply to get you excited about the possibilities. Long term plans call for The Valley Loop Trail to circle the farm within Hidden Springs on the south side of the creek and tie into a trail along Dry Creek. Opportunities for wildlife viewing and enjoying the beauty of this creek are outstanding.



Schick-Ostolasa Farmstead Historic Site

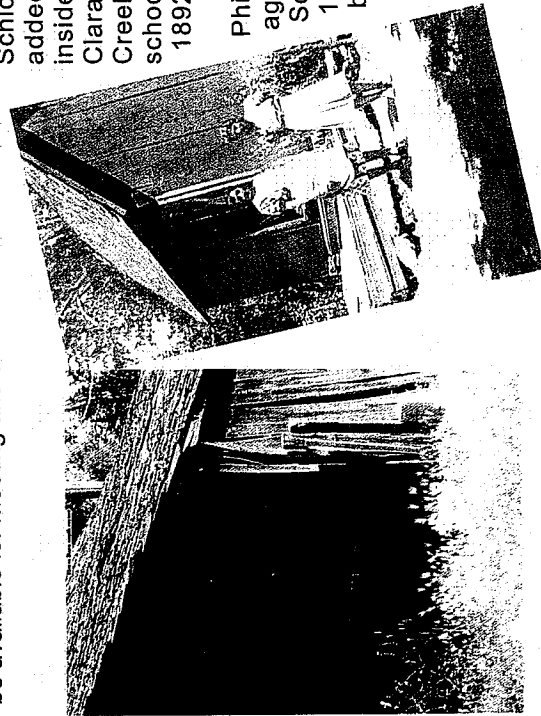
Farmstead buildings:

- two-story farmhouse
- detached kitchen (Red House)
- root cellar and sheds
- chicken house
- horse barn
- large barn about 500 feet south

The Dry Creek Historical Society is rehabilitating the Farmstead as a living history center with agricultural history displays and traveling exhibits.

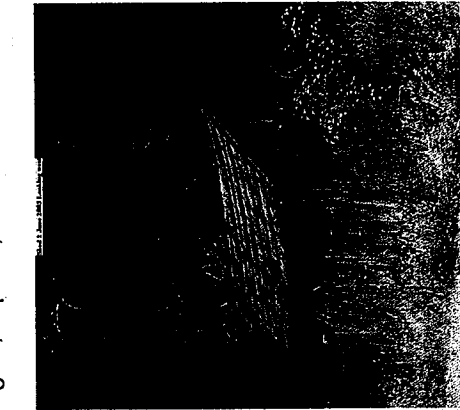
Antique landscaping will include a 1900-era flower garden. Some outbuildings will be returned to their original agricultural use for the nearby organic farm.

The farmhouse and garden will also be available for meeting and small event rental.



German Heritage 1864-1920

In the early 1860s, Phillip L. Schick and a partner homesteaded 160 acres along Dry Creek. They worked their claim with five horses, a wagon, a plow, and a harrow.



Schick patented the land in 1874.

Phillip L. Schick was born in New York of Bavarian parents.

Schick traveled to Idaho in 1862 by boat from California, through Oregon to Lewiston, and then by ox team to Boise. By 1868, his farmstead included the 2-story farmhouse that still stands there today.

Schick married Mary Yaryan in 1870 and added another section to his house with an inside staircase. They had a daughter, Clara, in 1873. Schick built the nearby Dry Creek School so his daughter could attend school. Clara married Forrest W. See in 1892. They had one son, Merl.

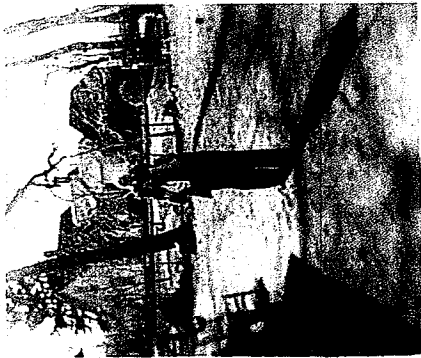
Phillip Schick died of burns in 1902 at age 64 in his Dry Creek house. The

Schick/See family owned the farm until 1920 when it was transferred to Boise banker and cattleman Frank H.

Parsons whose wife was Anna Louise Moore, daughter of Christopher L. Moore, president of Idaho First National Bank.

Dechambeau Family 1942-1979

Although the Dechambeau family did not live in the Schick farmhouse, they owned the property for more than 30 years. In the 1960s, the family



members built a split-level house nearby.

John and Earl Dechambeau ran about 200 head of beef with calves, dairy cows, and saddle horses at the ranch.

They introduced motorized haying equipment, ending the era of draft horses and reducing the size of haying crews.



For more information on this exciting project contact:

Dry Creek Historical Society
208-229-2323 ext 26

Basque Heritage (1920—2005)

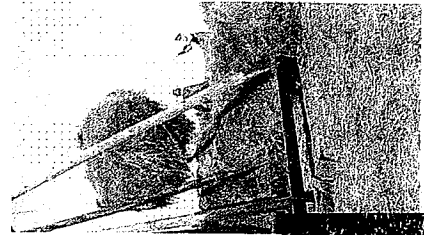
The Echevarria family lived in the farmhouse for a time after the Schick/See family moved out. In 1927, Parsons hired a Basque farmer, Costantino Ostolasa, to manage the farm.

Ostolasa was born in Spain and arrived in the U.S. in 1907 at the age of 17. He married Lucia Amias in 1917. The Ostolosas had four children: Anastasio (Andy), Aurora, Felisa [Iriondo], and Valentine. Costantino died in a tractor accident on the ranch in 1956 and Lucia passed away in 1979.

Andy Ostolasa began working the ranch with his father when he was 15 years old. After World War II, he married Connie Smith of Eugene, Oregon and brought her to the Dry Creek ranch where he and his father worked for the new owners, the Dechambeau family. The newlyweds moved into Parsons' old summer house where they lived until 1964, when a new house was built.

Haying at the Dry Creek ranch used draft horses until the 1950s. The haying crew stayed in a nearby bunkhouse, with their meals prepared by Lucia and her daughters. The bunkhouse also housed teachers from the Dry Creek School.

The Ostolasa family continued to live in the farmhouse until 2005.



DRY CREEK
HISTORICAL
SOCIETY



Dry Creek Historical Society

Yes, I want to join the Dry Creek Historical Society to help preserve the treasures of our past!

Name: _____

Address: _____

Telephone: _____

Email: _____

Membership Category. Please check one:

Business Member: \$ 100 _____
 Family Member: \$ 50 _____
 Individual Member: \$ 25 _____

Additional donation: _____

Please make checks payable to:

Dry Creek Historical Society
 5006 W. Farm Ct.
 Boise, ID 83714

All cash donations are fully tax deductible!

Dry Creek Historical Society

Schick-Ostolasa Farmstead Historic Site



Deep in the trees of the
 Dry Creek Valley
 stands a farmhouse
 built in the 1860s...